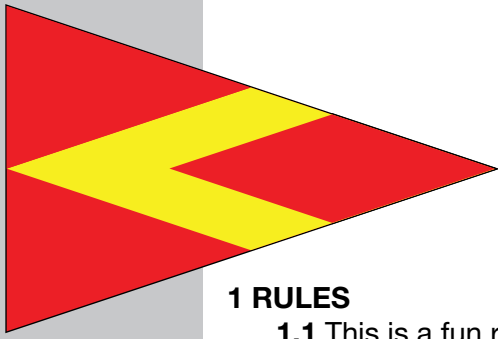


# LaSalle Mariner's Yacht Club

## 2024 Couples Race to Crystal Bay August 17, 2024

### Notice of Race and Sailing Instructions



NOR / SI - COUPLES RACE

#### 1 RULES

1.1 This is a fun race, governed by the Racing Rules of sailing.

#### 2 COMMUNICATION

2.1 On the water, channel 68 will be monitored.

#### 3 ELIGIBILITY AND ENTRY

3.1 This race is open to all sailboats, and the PHRF handicap system will apply for scoring purposes.

3.2 There will be 2 classes for this race, PHRF (White Flag) and JOG (Pink Flag). Start times will be assigned. This is a pursuit race with a twist.

3.3 Boats may enter the event by signing the sheet in the LMYC Clubhouse, or by notifying Race Chair Dave Nantais at: [drnantais11@hotmail.com](mailto:drnantais11@hotmail.com)

#### 4 FEES

4.1 There is no fee for this event.

#### 5 SCHEDULE

5.1 The first start from the harbour will be at: 11:00am

#### 6 COURSES

6.1 The course to be sailed will be as follows - See Attachment A Map - Have fun, Be safe. Start will be at your well. The distance for this race is **6.88NM**

6.2 The finish line will be between the Blue RC Flag on Tyne's boat and Amherstburg Range 65D before the opening to Crystal Bay.

**6.3 PLEASE KEEP IN MIND, COMMERCIAL TRAFFIC ALWAYS HAS THE RIGHT OF WAY!**

#### 7 BERTHING

7.1 As boats arrive, please raft off to each other so our group can "reserve" an area.

Rob Ferguson has volunteered to bring anyone from his home to Crystal bay who is not entered and would like to join.

Please reach out to Rob at (519)903-5541 for any transportation needs. He has advised to park at his home or the old Anderdon Tavern Property for shuttling.

#### 8 PRIZE

8.1 The winners will have their name engraved on a trophy for this event. This trophy will reside at LMYC.

#### 9 RISK STATEMENT

9.1 RRS 3 states: "The responsibility for a boat's decision to participate in a race or to continue to race is hers alone." By participating in this event each competitor agrees and acknowledges that sailing is a potentially dangerous activity with inherent risks. These risks include strong winds and rough seas, sudden changes in weather, failure of equipment, boat handling errors, poor seamanship by other boats, loss of balance on an unstable platform and fatigue resulting in increased risk of injury. Inherent in the sport of sailing is the risk of permanent catastrophic injury or death by drowning, trauma, hypothermia or other causes.

#### 10 TIME LIMITS

10.2 There is no time limit for this race - Enjoy your sail, enjoy your day, enjoy your stay.

#### 11 PROTESTS AND REQUESTS FOR REDRESS

11.1 There will be no protests accepted for this race except in the event of serious damage/injury requiring a claim and insurance company.

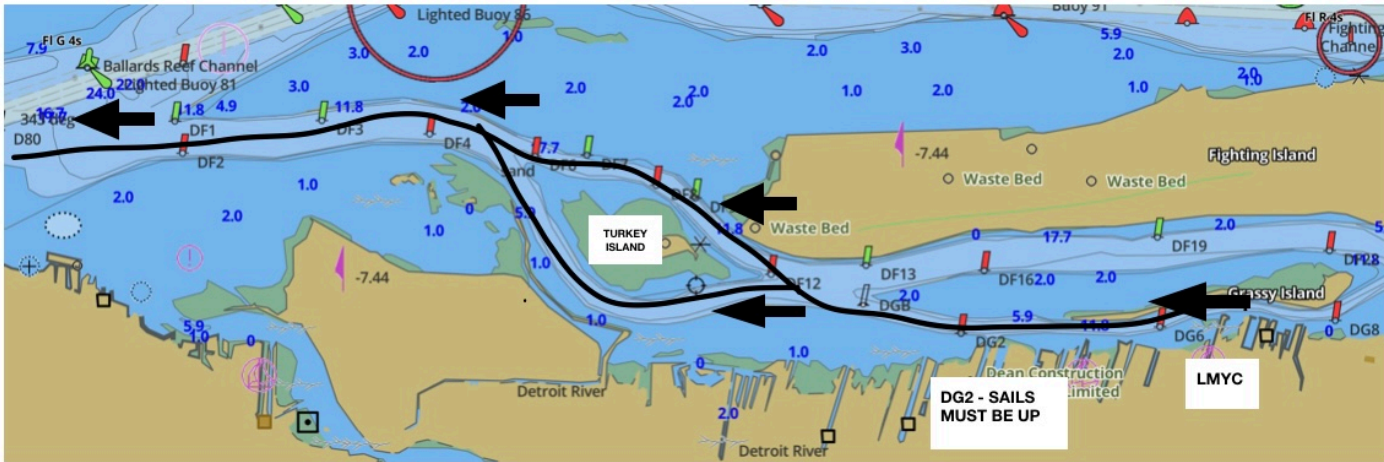
#### 12 DISCLAIMER OF LIABILITY

12.1 Competitors participate in this regatta entirely at their own risk. See RRS 4, Decision to race. The organizing authority will not accept any liability for material damage or personal injury or death sustained in conjunction with, or prior to, during, or after the regatta.

#### 13 FURTHER INFORMATION

13.1 For further information please reach out to Race Chair Dave Nantais at: [drnantais11@hotmail.com](mailto:drnantais11@hotmail.com)

# Attachment A MAP



Start is at your LMYC Dock.

We will use GPS time.

You must have someone on the dock until your start time.

At time of start you may motor out of your well and down the canal. Your boat must be under sail by the time you reach DG2 with motor off. You may sail on either side of Turkey Island. Please be aware of shallow areas.

Finish is the last lighthouse prior to the opening to Crystal Bay.

When entering Crystal bay please be aware of shallow areas.

